

MD 2 PATIENT SCREEN

	Help		+		Address Book
	Open Patients		+		A-Z Dex
	Add New Item		+		Print
	Letter Writer		+		Patient History*
	A-Z Dex		+		Patient Examination*
	Edit Patient Allergies		+		Letter Writer
	Past History		+		Prescribe Flu Vaccine
	Print		+		Prescribe Favourites
	Edit Patient Details		+		Pathology Requests
	Product Information		+		Recall
			+		CMI

* Only when in patient progress notes.
† Only if not linked to billing package.

MD2 MAIN SCREEN

	Help
	Open Patients
	Add New Patient†
	Import Investigation Results
	Check Investigation Results
	A-Z Dex
	Cancel Access
	Letter Writer
	Batch Print
	View Patients
	Product Information

Keyboard Shortcuts

WINDOWS

		Opens Start menu			
	+		Launches Explorer		
	+		Launches Find Files or Folders		
	+		Minimizes all		
	+		+		Restores all
	+		Shows the Desktop		
	+		Opens the Run dialog		
	+		Opens the System properties control panel		

If you have one of the newer keyboards with the 'Windows' key, you can use Windows key combinations to quickly access certain functions.

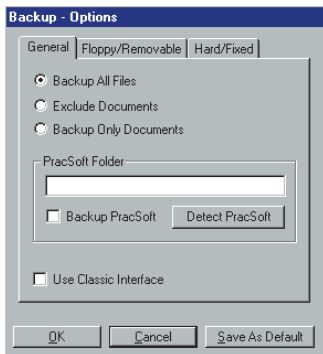
Backup Module in MD2.6

MD2.6 has a number of changes to its backup module [v2.5d] including a new interface, full progress reporting during backup and restore and a comprehensive array of user options.

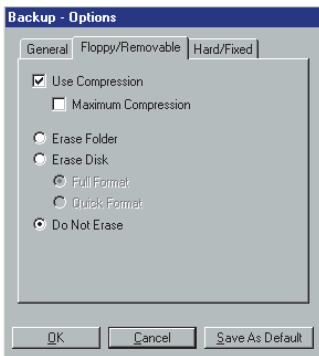
Using the backup module

By default, the new backup module uses a wizard interface, to assist you by stepping you through the backup process. If you preferred the previous interface, the classic interface can be selected in the backup options.

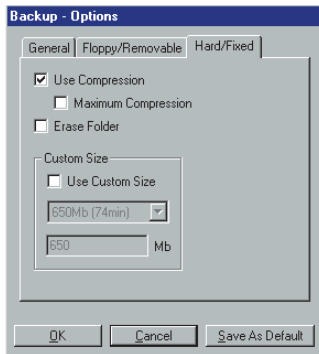
The GENERAL OPTIONS allow you to set the file groups to back up. It is possible to include the PracSoft databases in the backup if you are running MD2 linked to PracSoft. It also contains the option to use the "classic" interface.



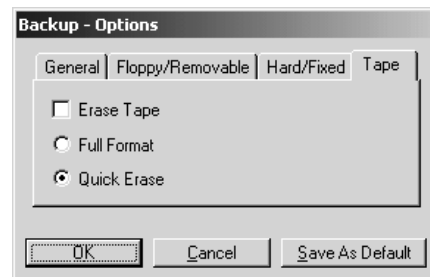
The FLOPPY/REMOVABLE OPTIONS allow for the configuration of the Compression and Erase settings when backing up to removable media.



The HARD/FIXED OPTIONS allow for the configuration of Compression and Folder erasure settings when backing up to non-removable media, e.g. hard disk. You may also specify a custom maximum size for the backup archives (only available for compressed backups).



The TAPE OPTIONS allow the configuration of the Erase settings when backing up to a tape drive. (only available for Windows NT 4 and above).



By clicking the Save As Default button at the bottom of the options window, the options will be saved for future use by the backup module.

Note: A 12 page Backup Manual can be downloaded from the Medical Director website – <http://www.md.com.au/docport/>. Further information is also available in the MD2 help file.

**MEDICAL DIRECTOR AND
HEALTH COMMUNICATION NETWORK LIMITED**

Email: support@md.com.au
Website: www.md.com.au/docport
Technical Support: 1800 241 910
Ph: 07-4151 1910
Fax: 07-4151 1896

