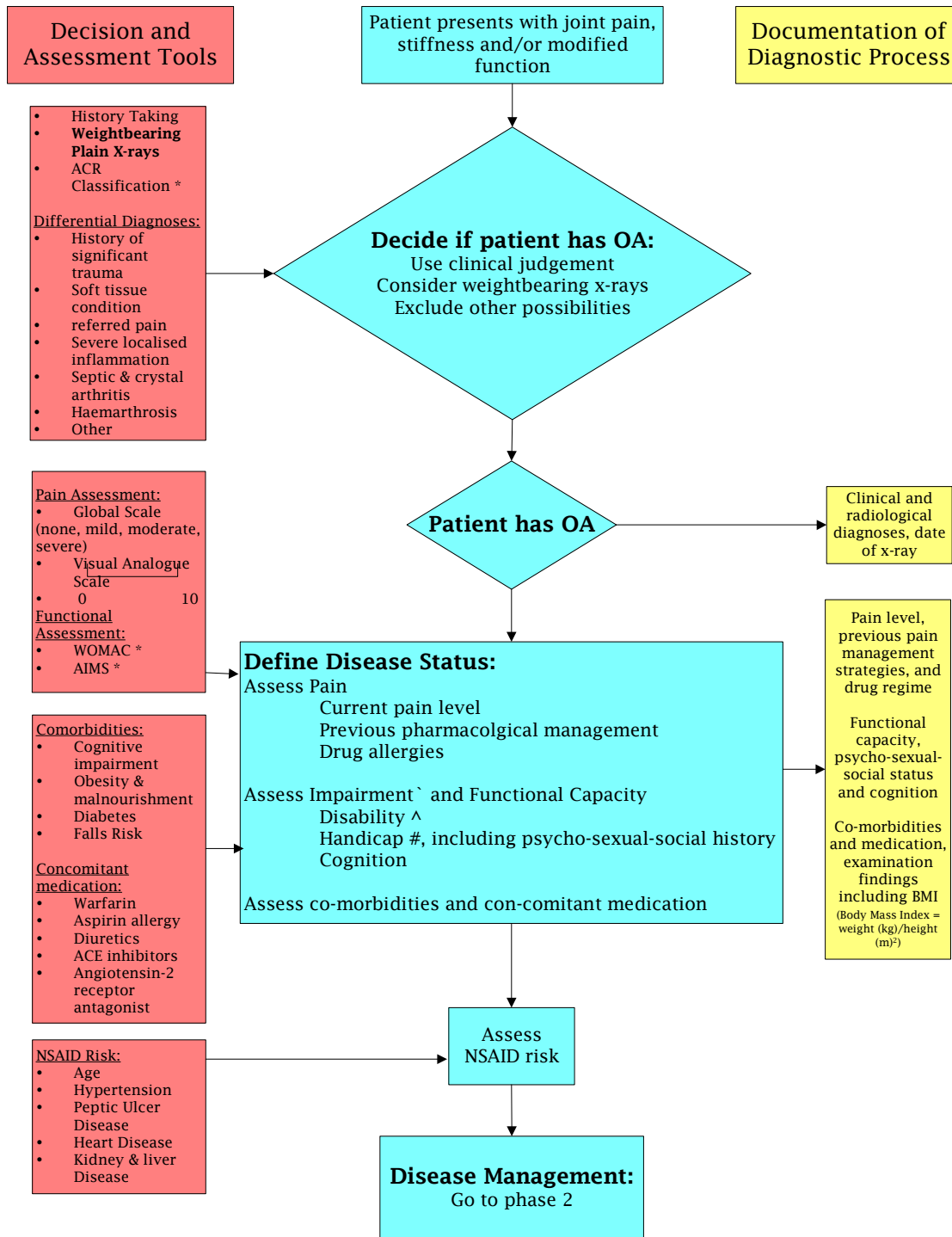


OA Clinical Pathway Model of Care

Phase 1 - Diagnosis



* useful for research

^ Impairment - Dysfunction resulting from pathological changes in a system, eg. impaired movement.

^ Disability - Consequence of impairment in terms of functional performance (ie. disturbance at the level of the person).

Handicap - Disadvantages experienced by the individual as a result of impairment and disabilities. This reflects the interaction and adaptation to the individual's surroundings.

www.nsc.nhs.uk/glossary/glossary_main.htm

OA Clinical Pathway Model of Care

Phase 2 - Disease Management

